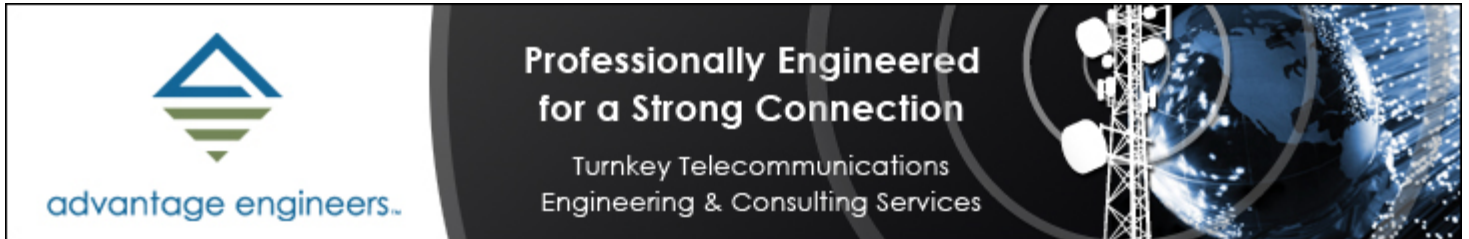




# Inside Towers

Monday, March 6, 2017

Volume 5 | Issue 45



**advantage engineers.**

**Professionally Engineered  
for a Strong Connection**

Turnkey Telecommunications  
Engineering & Consulting Services

## Top Story

Brought to you by **COMMSCOPE®**

### [Rules to Ease Broadband Deployment Set for FCC Vote March 23](#)

The FCC is considering several wireless items and one incentive auction decision at its next open meeting set for March 23. One item, titled “Cellular Service Reform” would facilitate mobile broadband deployment, including LTE, promote greater spectrum efficiency, and reduce regulatory burdens and costs. Carriers have been telling lawmakers and the FCC much of these reforms would help ease the path to 5G deployment.

The rulemaking would eliminate outdated cell regulations or those that hinder innovation. The actions would continue the transition of the 800 MHz Cellular Service to a geographic licensing framework, increasing licensees’ flexibility to change their systems as needed to respond more quickly – and at less cost – to evolving market conditions and consumer demand, according to the agency. [Continue Reading](#)



**Towers overweight? Reduce the fat in your fiber.**

**COMMSCOPE®**

#### [California](#)

### [Sonoma Commissioners Turn Whines Into Water Tower](#)

Neighbors of the proposed location for a new Verizon Wireless facility were disappointed with the recent decision of the Sonoma Valley Citizens Advisory Commission, but nearby Verizon subscribers have a reason to rejoice. When the commission met on February 22, they voted 6-2 in favor of constructing a 67-foot faux water tower to fill a coverage gap in this quaint and prosperous city in the heart of wine-making country. Michelle Ellis, a land use planner with Complete Wireless Consulting said the closest wireless tower is 1.7 miles away, and towers are generally placed one mile apart for optimum coverage. The *Kenwood Press* said residents living nearby were not in

favor of the tower because it would clash with the rural features of the region. The tower is located at [2550 Warm Springs Rd. Glen Ellen, CA](#). The site is mostly surrounded by trees and fields, with large homes and swimming pools breaking the landscape.

At the hearing, Ellis told the commission, "It's pretty much a dead zone for Verizon." The proposal will be sent to the county Board of Zoning Adjustments, but the advisory commission requested Verizon provide a coverage map if was to co-locate on an existing tower, a mockup of what the tower will look like, and plans to shield the facility from a neighbor using the same driveway. Residents voiced concerns over radio frequency exposure, and claimed a Verizon tower is not necessary because AT&T provides coverage in the area. Ellis countered the tower would meet all federal guidelines, and explained the final design was chosen by the county planner. The next hearing will take place later in March.

## Greenpeace Study Says 3.3M Tons of Smartphones Thrown Away Per Year

**GREENPEACE** A new study exploring the effect of smartphones on the planet shows the amount of power used to manufacture smartphones over the past ten years is equivalent to one year's power supply for India. Greenpeace issued the 10-year study titled, "[From Smart to Senseless: The Global Impact of Ten Years of Smartphones.](#)" The report provides many minute details, says *IT Web*, and lists areas of improvement.

Since the first iPhone was released in 2007, 7.1 billion smartphones have been manufactured using 60 elements. The amount of materials involved in the process makes the extensive supply chain bulky. While in the past, plastic has been derived solely from crude oil, there is a growing trend to use post-consumer recycled plastic in the manufacturing process. Greenpeace estimated e-waste from smartphone production reached 3.3 million short tons in 2014, and only 16 percent of this is recycled. In addition, Greenpeace found batteries are not easily replaceable, which leads to less recycling. [Continue Reading](#)



### [Pennsylvania](#)

## "Can Ye Hear Me Now?" New School Plan In Lancaster Includes Cell Tower



A new school proposed in in Lancaster Township would be built on a field and park near Wheatland Middle School by Millersville Pike and Hamilton Park Drive. The proposed cost for the project is \$18.5 million, according to *WGAL*.

A group called The Friends of Lancaster Community Park is concerned with the design. They want the land to continue functioning as a park next to playing fields and a community garden. They also have questions about two other things that would be built along with the park – a cell tower and a 3 million-gallon water tank, *WGAL* reported.

A community meeting is scheduled for 6 p.m. Thursday at the Wheatland Middle School Library to discuss the plans.

### [New York](#)

## Town of Lakewood Says 'No' to Tower: Coverage Need is Lacking...Plus It's Ugly

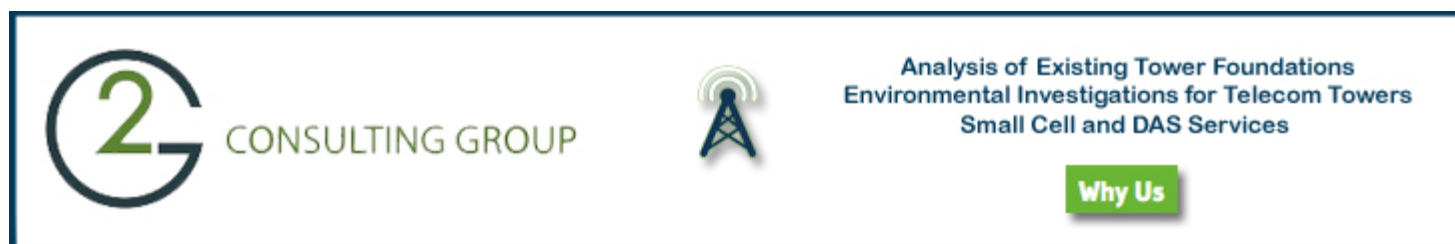
Opponents of a proposed 180-foot cell tower won a significant victory in Lakewood after the Zoning Board of Appeals denied an application for a 180-foot cell tower on a 4-1 decision, reports the *post-journal.com*.

The Board cited aesthetic concerns and the fact that Up State Tower Co. and Blue Wireless failed to show a significant gap in coverage that would warrant the structure.

"This was an extremely complicated and arduous process," said Mayor Cara Birrittieri during Monday's meeting of the village Board of Trustees. "However, with the skilled guidance of both our Village Attorney John LaMancuso, and special counsel, Rich Stanton, along with Deputy Chair Myra Blasius, the ZBA followed the law and arrived at a decision."

During a public hearing last month, both sides voiced their respective opinions over the proposed structure. Several citizens held that the structure was unnecessary and would negatively affect the aesthetics of the community.

The Lakewood Fire Department—who would have received rent from the tower being placed on its land—supported the tower application.



## Goodman to File For Chapter 11 But Operates 'Business as Usual'

Goodman Networks Inc., some of its subsidiaries and the parties subject to the company's previously announced Restructuring Support and Forbearance Agreement (RSA) signed an amendment to the RSA; Among other things, it changes the outside date by which Goodman must begin Chapter 11 cases to March 13, 2017. The company expects to begin soliciting votes to accept or reject the prepackaged Chapter 11 plan of reorganization in the near term before actually filing for Chapter 11 protection.

The terms of the RSA provide for previously announced recoveries to Goodman's creditors and interest holders, including honoring the company's obligations to its customers, employees, vendors, and other unsecured creditors in the ordinary course of business with no disruptions. Goodman will continue to operate its business as usual in all respects and the Chapter 11 filing is not expected to have an impact on operations.

## Small ISPs Now Waived From Extra Reporting Regs

[UPDATE](#) The order exempting small broadband providers from the extra reporting requirements of the 2015 Net Neutrality rules is now in effect. Broadband providers with 250,000 or fewer connections as reported on their most recent Form 477 are affected.

The change means smaller, rural broadband providers are now free to devote more resources to operating, improving and building out their networks. The change is retroactive to cover the period beginning January 17, 2017 and will end in five years, on March 2, 2022.

The enhanced transparency disclosure requirements for ISPs require providers to disclose promotional rates, all fees and/or surcharges, all data caps and allowances, and additional network performance metrics like packet loss.

Initially, ISPs with 100,000 or fewer broadband connections were exempt from the extra reporting regs for one year; that ran out in December.

The order adopted by the FCC on February 23 was controversial. Several rural broadband and wireless organizations told the agency the extra paperwork was “onerous” and “burdensome.” However FCC Commissioner Mignon Clyburn and fellow Democrats on the Hill blasted the move, saying it will make pricing and performance information less transparent to consumers.



## Next Phase of FCC’s Mobility Fund Kicks In Soon

The details of the order launching the next phase of the FCC’s Mobility Fund have been [released](#). The fund offers financial support to carriers to preserve and extend mobile broadband and voice services in unserved and underserved areas. The item takes effect 30 days after Federal Register publication.

At its February 23 meeting, the FCC voted to provide up to \$4.53 billion over 10 years to expand 4G LTE coverage to areas that don’t have that now, with \$340 million reserved for Tribal lands. Part of what the commissioners did was set rules for an [auction](#) for the money.

Their action focuses on census blocks unserved by broadband in 20 states where the nation’s largest carriers – known as “price cap” carriers – declined last year’s Connect America Fund offer of support. Also included in the auction are locations across the country with extremely high deployment costs.

---

**INVITE INSIDERS**

Show your friends and colleagues what they’re missing.

Click on the button above which will open an email that includes the link to sign up for Inside Towers.

Fill in your friend’s email address, CC: [megan@insidetowers.com](mailto:megan@insidetowers.com) and send away. You could win a \$100 Amazon gift card.

---

**Tower Ticker**

March 3, 2017 at Close



SYMBOL	TIME & PRICE	CHG & % CHG		DAY'S LOW & HIGH		VOLUME	52-WK HIGH	52-WK LOW	
AMT	04:00pm EST	115.67	+0.86	+0.75%	114.35	115.76	1,360,833	118.26	93.69
AMX	04:00pm EST	13.36	+0.22	+1.67%	13.175	13.43	3,122,347	15.95	11.02
CCI	04:01pm EST	91.75	-0.94	-1.01%	90.85	92.77	2,545,992	102.82	79.38
CTL	04:01pm EST	23.48	-0.05	-0.21%	23.38	23.64	8,598,491	33.45	22.86
DY	04:02pm EST	96.54	-1.24	-1.27%	96.32	98.21	1,069,646	98.47	55.1
ERIC	04:00pm EST	6.60	+0.07	+1.07%	6.55	6.61	3,190,740	10.2	4.83
FTR	04:00pm EST	2.87	+0.06	+2.14%	2.81	2.90	29,136,386	5.85	2.78
LVLT	04:02pm EST	56.84	-0.14	-0.25%	56.62	57.04	1,623,482	60.13	44.01
S	04:01pm EST	8.90	+0.17	+1.95%	8.66	8.91	12,532,915	9.65	3.12
SBAC	04:00pm EST	114.98	-0.30	-0.26%	114.77	115.77	1,254,095	118.57	91.06
T	04:00pm EST	42.01	-0.06	-0.14%	41.76	42.06	20,572,386	43.89	36.1
TMUS	04:00pm EST	63.56	+1.02	+1.63%	62.00	63.61	4,349,465	65.41	36.26
VZ	04:02pm EST	50.09	+0.11	+0.22%	49.80	50.14	12,429,241	56.95	46.01
ZAYO	04:02pm EST	32.19	-0.02	-0.06%	32.02	32.52	3,015,518	35.65	23.25





HIT THE CARRIER JACKPOT

2017 MOBILE CARRIERS SHOW

CAESARS PALACE, LAS VEGAS APRIL 5-7, 2017





## Zoning & Moaning

[Wisconsin](#)

### T-Mobile Tells State Rep it Will Back Off Plans to Lease on Proposed Tower

Opponents of a cell tower in [Mequon, WI](#) gained momentum after representatives from T-Mobile said they were no longer interested in renting space on the tower, reports *gmtoday.com*.

State Rep. Jim Ott met with three representatives from T-Mobile at his office in the state capital who confirmed they were no longer interested in installing equipment on the 195-foot structure. But he noted this does not mean the cell tower application is dead.

“This does not mean there is not going to be a tower,” Ott told *gmtoday.com*. “The tower is still in the works, but I think what we heard yesterday is good news.” [Continue Reading](#)



### California

## Isolation Prompts District to Support Tower Proposal

Vital Statistics: AT&T will give the Inverness Public Utility District \$14,904 a year to lease land for the tower, and associated equipment.

Wireless dead zones are playing a crucial role in motivating a local municipality to approve a new cell tower. The Inverness Public Utility District (IPUD) was approached by AT&T. The company is hoping to build a wireless tower on land owned by the district, and is willing to pay \$14,904 a year for land to house the tower, antennas, radio equipment, and backup generator, says the *Point Reyes Light*. When the subject was broached at the February 22 board meeting, IPUD's general manager Ken Eichstaedt was supportive. "We ought to have a discussion on having a cell phone tower. If people don't want it, okay. But we are isolated," he said.

Eichstaedt believes the tower will benefit the district's communications and revenue stream, and hopes those present at the board's March 22 meeting will agree. The board will hold full discussion of the tower at that time. If the district approves of the tower, AT&T will also need permission from Marin County to build the facility. Benjamin Golombek, a spokesman for AT&T, said the tower is connected to the Connect America Fund. He said, "Our goal is to provide the fastest, most reliable and most affordable service to all of our customers and this could help to bring faster internet to West Marin County."



(800) 653-3392



Cost Effective • Simple to Install • Peace of Mind



Seven Get Competent Rescuer Recertification at NATE UNITE 2017



Seven industry workers received their Competent Rescuer Recertification during this one day, intensive course last week in Fort Worth, under the careful watch of Instructors:

- John Paul Jones, Safety LMS
- Rob Siegel, ENSA North America
- Tom Wood, Vertical Rescue Solutions by PMI

Upon completion of this course, a Tower Technician that holds a current Competent Climber/Rescuer certification will receive a Competent Rescuer recertification that meets the NATE CTS and ANSI Z 359 standards requirements. Competent Rescuer retraining requirements are an annual requirement and are widely neglected as the Competent Climber retraining requirement is bi-annual. The event will be a joint effort between Safety LMS, Vertical Rescue Solutions and ENSA. The certificate will be jointly branded from the three companies. Five different rescue techniques will be taught in this course. Attendees must bring their own climbing gear and will be required to present a current Competent Climber/Rescuer card prior to entering the event. Total course time is four hours per course.



[Tower Calendar](#)

[See All Calendar Events](#)



[CCA Mobile Carriers Show](#)  
April 5-7, 2017, Las Vegas, NV

Demand for high-speed mobile broadband continues to grow, and subscribers are already anticipating 5G rollouts and new data-intensive services. Join discussions on these trends as competitive carriers and thought leaders in the technology, infrastructure, media and regulatory fields meet at Competitive Carriers Association's (CCA) 2017 Mobile Carriers



Show (MCS) at Caesars Palace in Las Vegas, April 5 - 7, 2017. The keynote program and educational sessions will focus on technology and business approaches that help carriers maximize their current network infrastructure and plan for the future.

The keynote program will address broadband access in rural America, along with other important topics including emergency preparedness and 5G infrastructure. Attendees will hear from carrier executives and technology leaders about the challenges and opportunities ahead. Keynote speakers include companies such as: Ericsson; FirstNet; Huawei; Interop Technologies; Nokia; TNS, Sprint and more carriers. [Continue Reading](#)

## Construction



[Tower-Pro.com](#), *Inside Towers'* companion Buyer's Guide has over 3,500 listings in 130+ categories. Each month we will be featuring one of our primary categories. This month, we're highlighting Construction. Within this category are subcategories:

- Aerial Services
- Build-to-Suit
- Crane Rental/Sales
- Decommissioning
- Directional Boring
- Emergency Repair
- Heavy/Specialty Equipment
- HVAC
- Man Lift Rental and Sales
- Power & Grounding Installation
- Shelters and Enclosures
- Site Prep/Maintenance
- Site Surveys/Audits
- Storm Remediation
- Tower Erector
- Tower Foundation Install/Drilling/Repair
- Tower Maintenance/Inspections
- Tower Modification/Reinforcement
- Tower Painting
- Trenching
- Turnkey Systems



Should your company be in this category?

See if you're listed and if you only have a basic listing, find out why you should upgrade [here](#).

We will be randomly highlighting our enhanced listings in *Inside Towers* for added exposure.

[Email us](#) with questions or for assistance.

## Correction

### Eco-Site Story Corrections

In a story that ran last Friday in *Inside Towers* entitled "Eco-Site Gets \$50M in Financing and Plans on Building More Towers" please note the following changes:

- While Eco-Site plans to raise additional equity capital in the future, the raise will not necessarily take place in 2017.



- Eco-Site is described as a "tower manufacturer" but does not actually do so. Rather, they are a traditional tower and densification solutions company.
- Statements attributed to "Eco-Site spokesman Dan Gauss" were taken from a general company statement.
- And finally, Dale Casey is, in fact, Dale Carey.

Ed: Inside Towers regrets the errors.

## Tower Shot

Brought to you by **ROHN**<sup>®</sup>



[CTI Towers Inc.](#) tower site 'Zion Hill' in Woburn, MA.

The towers shown are 10465 Zion Hill 1, 80465 Zion Hill 2, 88465 Zion Hill 3

[Email](#) your tower shots and follow us on [Instagram](#)!

*proudly sponsored by*

**SPECIFY ONLY THE BEST! 20' - 2000'**  
70 years of tower design & manufacturing  
**SALES@ROHNET.COM**      **309.566.3000**

**ROHN**<sup>®</sup>  
MADE IN USA

## Stay Connected

Keep current throughout the day.

INSIDE TOWERS

TOWER-PRO.COM



## Subscriber Tools

Managing Editor: [Jim Fryer](#)

Washington Bureau Chief: [Leslie Stimson](#)

Writers: Braden Hall & Ben Horvath

Marketing: [Megan Reed](#) Creative: [Cara Aston](#)

Advertising & Classifieds: [Phil Cook](#) | [Mike Dryden](#) | [Sharon Barone](#) | [Nancy McKinley](#)



You're receiving this email at [lore@insidetowers.com](mailto:lore@insidetowers.com) because you subscribed to Inside Towers newsletter at [www.INSIDEtowers.com](http://www.INSIDEtowers.com).

Send your press release, breaking news, videos, photos, leads, or exclusive stories to our staff at [Editor@INSIDEtowers.com](mailto:Editor@INSIDEtowers.com) or [fill out this form](#).

If you are interested in placing an ad in the Inside Towers daily newsletter or on our website, please give us a call at 904-285-3239 or email us at [advertising@INSIDEtowers.com](mailto:advertising@INSIDEtowers.com) to get started.

Don't forget to [Subscribe](#).

Inside Towers | 149 S. Roscoe Blvd. Ponte Vedra, FL 32082

© 2017 Inside Towers, All rights reserved.

[Unsubscribe](#) [lore@insidetowers.com](mailto:lore@insidetowers.com) from this list.