



Inside Towers

Tuesday, December 1, 2015

Volume 3 | Issue 233

'Mobile Data Will Soar Some 700 Percent Over Next Five Years'



That's what Jonathan Adelstein, chief executive of PCIA – The Wireless Infrastructure Association, told readers of the *Los Angeles Business Journal* on Monday in a 550-word essay on the future of connectivity in Los Angeles and its impact on the Southern California economy.

"HetNet" might sound like slang for the basketball hoops at Staples Center, but it's really about wireless broadband – and much of Southern California's economic and technological future hinges on it," Adelstein wrote. "HetNet refers to "heterogeneous networks" – the many different ways that mobile data can be transmitted via wireless

broadband facilities, from towers and other "macro" sites to small cells and other "micro" sites. Small cells and distributed antenna systems, or DAS, are now integral components in the arsenal of every wireless carrier. They're also uniquely suited to Southern California's terrain and population density." [Continue Reading](#)

RF Antenna Alignment.

Critical to meeting RF design specifications.

[GET A DEMO](#)



InSite Closes Mt. Wilson/Poole Tower Complex Deal



The Alexandria, VA-based InSite, a subsidiary of the 15-year-old InSite Wireless Group, LLC, closed on its deal for Poole Tower Complex on Los Angeles' famous Mt. Wilson on November 24. The complex was one of the last family-owned sites to operate at Mt. Wilson, the most famous multi-tower broadcasting location in the United States, notes Bob Heymann, of Media Services Group/Chicago, who served as the exclusive broker in the deal representing Poole Properties, Inc. "This is beachfront property for broadcasters," Heymann told *Inside Towers*.

Rising nearly 6,000 feet above Los Angeles with a sweeping view of the Pacific Ocean, the 60-plus-year-old Poole Tower Complex was developed by legendary LA broadcaster John H. Poole when he was granted the first commercial UHF television construction permit in LA for KBIK/Channel 22 in 1952. The following year the station changed its call letters to KBIC-TV, and in 1959 the TV station moved to the complex. Today, iHeartMedia's KBIG-

FM and KYSR-FM, MundoFOX 22 KWHY-TV and KXOS-93.9 FM are among the broadcast tenants along with other wireless communications companies. [Continue Reading](#)

Tower Collapse Suits Reach Federal Court Docket



It's been nearly two years since the 2014 fatal West Virginia tower collapse near Summit Park and the cases have now moved from circuit court to federal court. A structural reinforcement project caused the collapse of two towers that killed three people and injured two others. The case involves SBA Communications and FDH Velocitel, as well as several of their subsidiaries who were involved in the project.

RCR Wireless News reports that there have been a few changes regarding the wrongful death and personal injury lawsuits. The plaintiffs have changed their complaint to also state that the employer should have given workers at the site more detailed information regarding the methods to be employed while replacing and maintaining equipment at the site. According to statements from the plaintiffs, S&S Communications failed to enforce known safety standards while repairs were being made. [Continue Reading](#)



School District Approved for \$565,459 in Wireless Funding

There are eight public schools in the Fitchburg, MA, school district, and this winter they finally will have wireless after waiting five years.

The district applied for federal funding in 2011, according to *Sentinel & Enterprise News*, and it finally got \$565,459 from the Universal Services Administrative Company Schools and Libraries Division of the FCC. Combined with a \$127,457 technology bond, the monies will go toward a wireless network in the eight schools, installed by Custom Computer Specialists.

District IT Director Eileen Spinney told *Sentinel & Enterprise News* 1,400 Chromebooks were added in the last two years, an investment that will be helped with the upgraded wireless infrastructure. Previously, the schools only had wireless hotspots. The upgrade should be complete by February or March.

Cell Tower Gripes in the Northeast Corridor

by Michelle Choi of [Lease Advisors](#)



Amtrak has consistently faced widespread criticism for its poor WiFi in the heavily-traveled Northeast Corridor that stretches between Washington and Boston. But despite efforts to resolve the issues, the problem of providing reliable and fast cellular service on trains moving more than a hundred miles an hour is inherently difficult. The quality and number of cell sites constrain the railroad's ability to accommodate so many wireless users at a time.

Cellular service for commuters and travelers relies on the [cell towers](#) along travel routes, whether they lie along freeways or high-speed railways. As mobile device users move from one cell to another, their active calls or data

sessions must be transferred from one network channel to another, in a process termed handoff or handover. Handoff can also occur when a cell's capacity for accepting new calls is occupied and must offload traffic onto another overlapping cell in the same area. Terrestrial networks' source and target cells, the cell receiving and the cell transmitting respectively, are served from cell towers. The speed of Amtrak trains coupled with network interferences equal failed cellular handoffs, and failed cellular handoffs equal upset commuters. [Continue Reading](#)



Tower Ticker

SYMBOL	TIME & PRICE	CHG & % CHG	DAY'S LOW & HIGH	VOLUME
★ AMT	04:00pm EST 99.38	↓0.30 ↓0.30%	99.23 100.21	1,795,429
★ CCI	04:02pm EST 85.91	↓0.16 ↓0.19%	85.57 86.27	2,258,198
★ SBAC	03:59pm EST 105.16	↓1.23 ↓1.16%	104.57 106.15	1,204,813
★ S	04:01pm EST 3.65	↓0.08 ↓2.14%	3.62 3.79	24,566,950
★ T	04:00pm EST 33.67	↑0.10 ↑0.30%	33.42 33.75	24,902,331
★ TMUS	04:00pm EST 35.50	↓1.39 ↓3.77%	35.48 36.80	7,733,080
★ VZ	04:00pm EST 45.45	↑0.22 ↑0.49%	44.96 45.64	19,399,956

Zoning & Moaning

Village of Wheeling Board Rejects T-Mobile Tower Plan

The board in the Illinois town Village of Wheeling reviewed the construction proposal for the new T-Mobile cell tower and rejected it on November 23. The plan called for an 84-foot tower to be built on the properties of Holmes Middle School. The “no” vote followed the recommendation from the plan commission, which voted to not recommend approval on November 5.

The Village Board vote followed a series of residents who spoke in opposition to the tower during the meeting. Wheeling local, Mary Papantos, was quoted in suburban Chicago's *The Daily Herald*. She said, "There's no such thing as a good-looking cellphone tower, I don't care how you disguise them, they are what they are. There's no need for safety reasons or emergency reasons to have this tower located in a residential area."

The Daily Herald also quoted Dan VeNard, an attorney for Horvath Communications, as saying the plan would have ensured the tower would be built with an “inconspicuous profile” and would have benefited T-Mobile customers by lowering the number of dropped calls and increasing coverage in the region. The proposal called for a special-use

permit for a tower in a residential area. In the end, trustees on the Village Board determined the tower did not belong in a residential zone.

TWR **PARK**



**Over 100,000
Installations.**

www.twrlighting.com

International

British Columbia Park May Receive Cell Phone Tower

The rural life soon may come with better cell reception at Golden Ears Provincial Park in British Columbia, Canada. Rogers Communications has proposed a new cell tower specifically next to the Alouette campground area, where currently there is no cell reception.

The tower proposal was sent to the council at its November 24 meeting, and if approved by the council and Industry Canada, the campground's picnic areas, boat launch and campsites would receive cell service, according to *Maple Ridge News*.

Rick Laing, with Ridge Meadows Search and Rescue, told *Maple Ridge News* that rescue crews currently can only communicate via two-way radios and satellite phone, limiting rescue calls. He told the news site that "the public expects to be able to dial 911 during an emergency and be able to connect with emergency services, and that's needed in Golden Ears given the number of people who now crowd into the park every summer." Search and Rescue wrote a letter supporting the tower, and Industry Canada will be the final say in if the tower is approved.

Aussie Regional Train Service Getting Connected

When travelers in the state of Victoria, Australia, ask, "Do you have WiFi?" when boarding a regional train, the answer soon will be "yes."

Expected to start next year, free WiFi Internet will be granted to commuters on trains, thanks to the Victorian government, according to *WeeklyTimesNow.Com.Au*. Premier Daniel Andrews and Regional Development Minister Jaala Pulford signed off on the "regional rail connectivity project," first promised as a \$40 million project last spring by Denis Napthine, former Premier.

The duo hopes to make good on the now \$19 million promise, with the labor government involved in removing "mobile phone black spots along the Ballarat, Bendigo, Geelong, Seymour and Traralgon rail lines." Victoria has allotted \$21 million of the original fund to work with Telstra and the government to build 109 mobile towers across the region in the next three years.

India's Reliance Communications May Sell Reliance Infratel Stake

Reliance Communications (RCOM), which has about a 96 percent stake in tower unit Reliance Infratel, may be on the way to a sale. The New Delhi-based company would get around Rs 22,000 crore of the sale of about 43,500 mobile towers, which would be used to shave off some of its debt, *The Times of India* reported. The debt is reported to be around Rs 38,000 crore.

RCOM wants to bring the debt-to-ebitda ratio down to three in fewer than two years. It currently sits at about 4.64. "To achieve this target, Anil Ambani-led Reliance Group firm is planning to hive off its DTH business, sell stake in international operations at Reliance Globalcom and divestment of Infratel, among others," *The Times of India* said. The deal should be announced within 10 days.

Tower Tribe

Grant S. Cooper Is KMM's New VP/Sales

"Grant will be responsible for sales within North America with a focus on wireless telecommunications," the company announced Monday. "Grant has more than 15 years of experience in the telecom industry, managing and selling to high profile accounts. Most recently, he was the Sales Manager for Flash Technology/SPX Corporation where he aggressively led sales for the FAA Tower Lighting, M2M Solutions and NOC Center Services with a very large customer base since 2004. In addition to his experience in the wireless industry, Grant is currently pursuing his MBA at the University of Dallas.

For nearly 25 years, KMM has been supplying and servicing the telecommunications market. KMM is a certified woman-owned business enterprise, award-winning supplier with capabilities to deliver reliable and predictable results.

New Products

Street Lights Are Mini Cell Towers



Ericsson has created integrated cellular technology that incorporates 4G LTE network radios in the form of street lights called small cells. By supplementing existing cellular towers, the Philips' Smartpole Street Lighting uses existing towers with small cells to provide wider mobile broadband coverage while boosting the capacity of wireless providers. Los Angeles is the first city in the world to acquire this technology.

"The Philips Smartpole technology proves its role as the backbone in an outdoor Internet of Things platform capable of delivering new services and value. This is also fully aligned with many of (Los Angeles) Mayor (Eric) Garcetti's key priorities and outcomes by taking LED street lighting and turning it into a services hub that can adapt to the changing needs of a particular neighborhood over time," states Amy Huntington, President of Philips Lighting Americas.

Smartpole Street Lighting is energy efficient with the use of LED light bulbs. The goal of these lights include distributing demand to smaller cells. This can increase speed of signals for multiple devices with the satisfaction of customers the top priority. For more information about Philips Lighting, email [Melissa Kanter](mailto:Melissa.Kanter@philips-lighting.com) or call (732) 563-3994.

Tower Jobs

[Project Manager](#)

Stout Tower Services, Inc.

Company Profile

Brought to you by  Tower-Pro.com

If you're interested in having your company featured here, please [email](#) us a request.

Tower Calendar

Will you have a presence at these key wireless shows? Inside Towers is excited to be electronically distributed to the attendees.

Contact [Phil](#) or [Drew](#) to learn more.



FEBRUARY 22-25
NEW ORLEANS, LA



MARCH 14-16
NASHVILLE, TN



MARCH 22-24
LAS VEGAS, NV



APRIL 13-15
NASHVILLE, TN



WIRELESS WEST

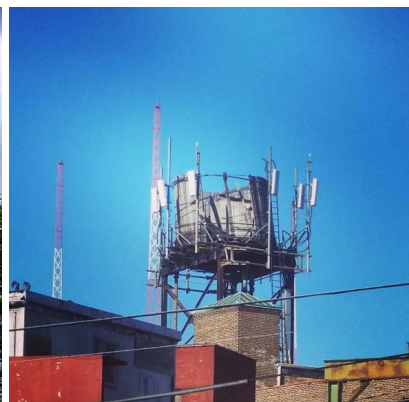
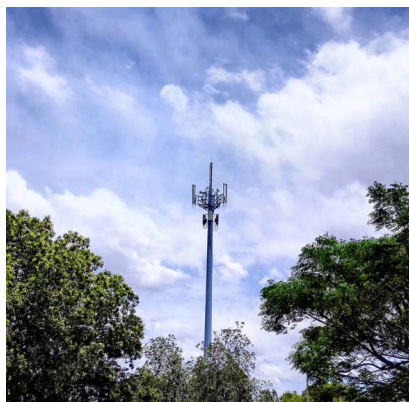
APRIL 20-23
ANAHEIM, CA



UTILITIES TELECOM
COUNCIL

MAY 3-6
DENVER, CO

Tower Shots



We love the view from the top and the bottom! [Email](#) your tower shots to Cara or tag us on

Subscriber Tools

Editor: [Jeffrey Yorke](#)

Writers: Braden Hall, Ben Horvath, Eleanor Snite, Alyssa Stahr & Catherine Wysoczanski

Advertising & Classifieds: [Phil Cook](#) & [Drew Simpson](#)

Tower-Pro: [Cara Aston](#)

Advertise

Send Feedback

Submit Stories

Stay on top of tower news by subscribing [here](#).

Current subscribers can change your email address [here](#).



You're receiving this email at lore@insidetowers.com because you subscribed to Inside Towers newsletter at www.INSIDEtowers.com.

Send your press release, breaking news, videos, photos, leads, or exclusive stories to our staff at Editor@INSIDEtowers.com or [fill out this form](#).

If you are interested in placing an ad in the Inside Towers daily newsletter or on our website, please give us a call at 904-285-3239 or email us at advertising@INSIDEtowers.com to get started.

Don't forget to [Subscribe](#) .

Inside Towers | 149 S. Roscoe Blvd. Ponte Vedra, FL
32082

© 2015 Inside Towers, All rights reserved.

[Unsubscribe](#) lore@insidetowers.com from this list.